

The background of the entire page is a deep red color. It features a pattern of vertical folds, resembling heavy theater curtains. At the bottom of the image, the tops of several rows of red theater seats are visible, receding into the distance towards the center. The lighting is slightly brighter in the center, creating a subtle gradient.

n@xtstage

**STRATEGIC PLAN
2016-2019**

Chairperson's Welcome

Hutt City is quietly transforming itself. In the last few years, the city has seen an unprecedented level of investment from the local Council and the private sector. New public infrastructure is being built, the High Street is being reinvigorated, a new hotel is under construction and the civic precinct is in the midst of a major makeover. It is exciting to think of an emerging arts and cultural hub that could base itself around the Dowse Art Museum, Riddiford Gardens, the renewed Town Hall, Events Centre and Administration Building, the Little Theatre and the Memorial Library. A cohesive collection of exciting event and performance spaces that would be the envy of any city in New Zealand.

All we need now is people. Bright, funny, talented, enthusiastic performers that engage and excite. Events that attract the crowds, performances that challenge the senses, make us think, make us cry and make us laugh. As a community, we will be in a privileged position with great facilities once the reformation of the civic precinct has been completed – but now we must fill them and create the vibrancy and activity that these spaces deserve, an activity that creates a sense of community and pride. That's where we come in.

We are Nextstage. We are a new professional theatre company that is proudly based in Hutt City. Our vision is simple. We want more people enjoying theatrical performances, more often. Our objective is to put on theatre performances of the highest calibre. Nextstage is a group of professional theatre practitioners, backed by a wider network of support staff and technical experts. We want to bring exciting shows from around the world to the Hutt as well as tell our stories to our community. We have access to a world-wide network of performance content that we want to bring to the Hutt and the wider Wellington region.

We want to connect with our community and provide them with performances that are affordable and accessible. We are a charitable trust. This means that even though we want to demonstrate the disciplines and skills of a professional theatre company, we are not profit driven. Our objective is to showcase performance art and use it as a vehicle to enrich our community. We are especially keen to develop our schools programme and expose children from all walks of life to the fun and wonder of live theatre, at an early age. We also want to support the development of the fantastic talent our young people have through an outreach programme for drama students in our colleges. Of course, in order for this to happen, we need the support of the community, funders, partners and benefactors. In this strategic plan, we have laid out our goals and set the targets that we seek to achieve. We have a clear plan to make it happen.

Through the support of the community and the talent of a hardworking Board of Trustees and experienced theatre practitioners, we hope to attract the patronage necessary to establish a vibrant theatre company that we can all be proud of. This plan should give investors' confidence. It demonstrates that we are organised and focused. We have a clear pathway and a burning desire to do something great.

Come join us!



Sue Avison
Chairperson
Nextstage Theatre Charitable Trust

Welcome to Nextstage!

I am proud to be the Artistic Director of Lower Hutt's first professional theatre company. For my entire adult working life I have been an actress, writer, and producer of human stories. True and fictional. Throughout my career, I have been privileged to be part of the worldwide industry that makes plays and shows with the aim to entertain and enlighten. Their presentation is always intended to reflect our communities. It can do this like no other art form because theatre is the universal grandstand where we come to enjoy ourselves by watching ourselves.

Nextstage seeks to present live performance at its best for the people who live in the Hutt Valley. We are motivated by a passion that contributes to a new cultural pathway that leads a creative Hutt City to the world. We can forge cooperative, creative relationships that make unique works of live entertainment. Works of entertainment that attract the Hutt's diverse local community and facilitates this community to identify themselves through performance art. Nextstage seeks to provide this at a lower cost with higher levels of engagement.

Nextstage promises to ignite a passion for new ideas and diverse voices through skilled use of the oldest storytelling tool in human history, the theatre. With it, we can communicate our differences and our sameness. We can educate our elderly and learn from our young, forging links with people of all ethnicities, age groups, and socioeconomic standing.

Not only do these generic benefits of the art of theatre contribute to the health of communities but they can also assist in the development of the identity of that community. Our goal is to promote this identity beyond city limits to a national and international presence that in return strengthens the profile of our city.

Nextstage is here and Lower Hutt is our home. We embody the principles of whanau and extend a welcome to all visitors. We view culture and people's expression of this as vital to the city's identity and its ability to proffer hospitality.

Nextstage is a small but select team of highly regarded professional theatre practitioners who wish to contribute to a better civic future through their creative skills for all the people of the Hutt and Wellington region. We are specialists in the business of manufacturing your fun!

Why theatre? The ability to express and experience another's expression in a beautiful way is restorative as well as enlightening and uplifting. Live performance is involving. A group of people gathering in a place with the purpose of being entertained can become a whole entity. This communal experience supports and strengthens ownership of our community. We want people of all ages and diversity to witness the magic of their special storytelling place.

Modern day arts delivery is Nextstage's business and, with you, we can make a difference.

Your place as 'our supporting act' is warmly invited.



Geraldine Brophy
Artistic Director
Nextstage Theatre Company

Vision Statement

More people enjoying high quality arts, more often

Mission

To deliver enriching experiences through live theatre in a passionate, sustainable and professional manner

How these relate to our specific Charitable Purposes

The objectives for which the trust is established are:

To foster, develop, and encourage all forms of performance art, including without limitation, theatre, music, and dance in a manner that benefits the community.

The provision of artistic, cultural and theatrical training and education that assists with the development of students in schools and other places of learning.

The provision of any other charitable purpose that promotes or furthers the discipline of live theatre in New Zealand.



Alignment

with Governmental Agencies' Policy and Strategies

Nextstage Theatre Charitable Trust believes in the value that the performing arts can provide to society. Theatre can offer an audience great challenges as well as entertain them with the pleasure of an outstanding performance. We want to make sure we align with local and central government strategies. Therefore, we acknowledge the Government policies that relate to the performing arts sector through their agency, Creative New Zealand.



Creative New Zealand

Creative New Zealand's vision for the arts in New Zealand:
dynamic and resilient arts valued in Aotearoa and internationally

Creative New Zealand encourages, promotes and supports the arts in New Zealand for the benefit of all New Zealanders through funding, capability building, an international programme and advocacy. They have a vision for a dynamic and resilient arts scene in Aotearoa and strongly support Nextstage through advice and access to funding. They strongly support the practise of the performing arts and the development of professional theatre in areas such as the Hutt Valley.



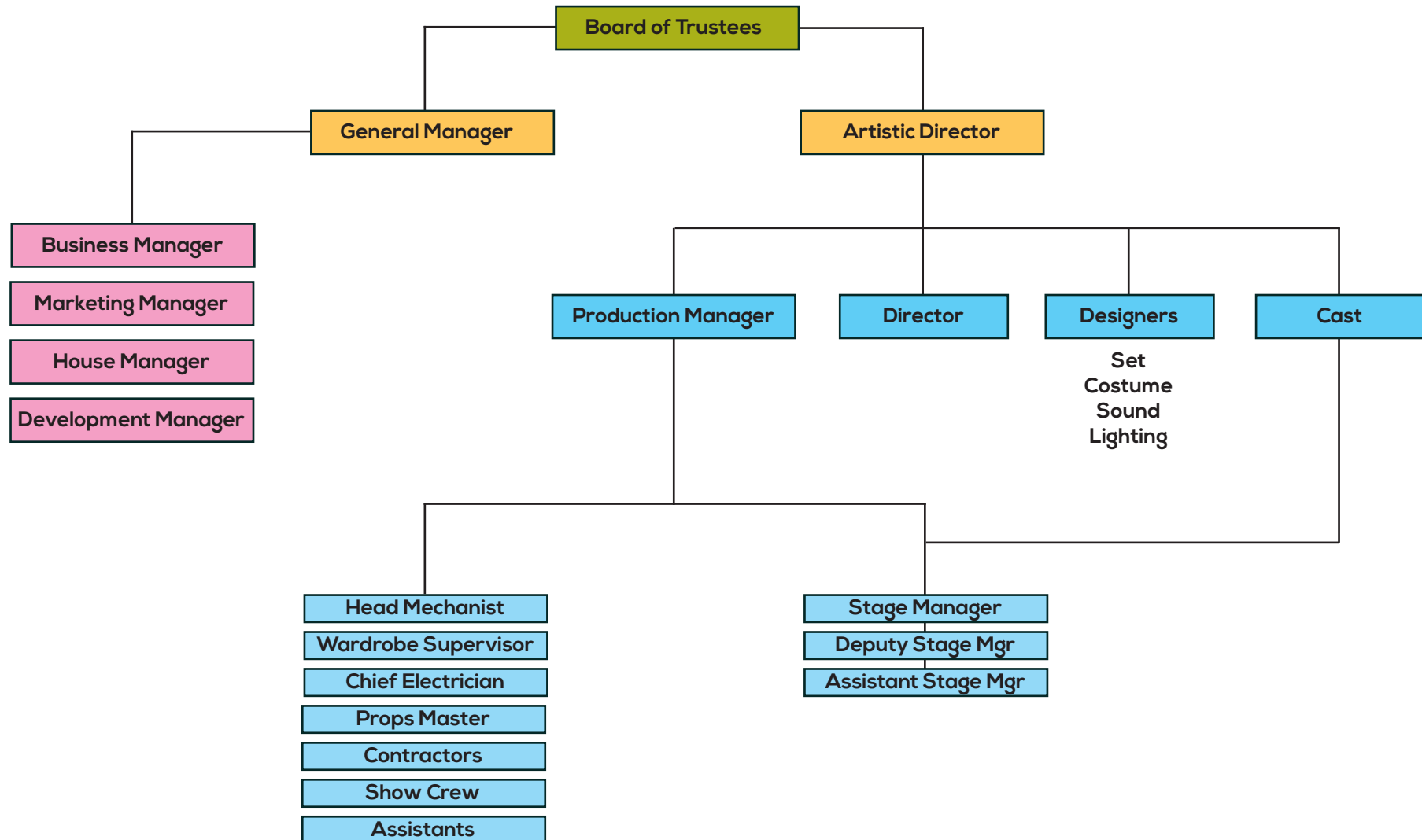
Hutt City Council

Council recognises the importance of the arts and culture in enriching the lives of people who work and live in the city, as well as visitors to the Hutt. It "...provides a sense of well-being and connectedness for our communities, including different age groups and abilities. Community arts...provides a significant role by improving the community's quality of life." – (HCC Arts and Culture Policy). The policy goes further by advocating for the "...need to have a quality presence of community arts and culture in the centre city of significance." Nextstage Theatre Company has responded to this invitation by locating itself within the walls of an integral building of the rejuvenated civic precinct, The Little Theatre.

Strategies

Strategy What are we trying to achieve?	Transformation What changes will occur?	Outcome What will the future state look like?	Action What steps will it take to achieve the outcome?	Measure What targets are set to ensure we are successful?
Sustainability Strategy An economically sustainable and profitable theatre company	<ul style="list-style-type: none"> We will become financially savvy. We will be seen as a worthy and attractive community investment. 	<ul style="list-style-type: none"> Capacity audiences. Healthy balance sheet. Valued sponsorship partnerships. Financial liquidity. 	<ul style="list-style-type: none"> We will establish a subscriber base. We will attract sponsorship. We will acquire financial acumen and demonstrate sound financial management. 	<ul style="list-style-type: none"> We will have 100 subscribers by 31 January 2018. We will have 5 commercial sponsorships to the value of \$50,000 by 31 September 2017. We will attract \$100,000 in grants each year by 1 Jan 2018. Financial Reports will be up-to-date for each Board meeting to trial balance standard.
Facility Strategy The Little Theatre will be fit for purpose	<ul style="list-style-type: none"> Technical and structural improvements will enhance performance standards and audience experience. 	<ul style="list-style-type: none"> The best small performance venue in the Wellington region, located in central Lower Hutt. 	<ul style="list-style-type: none"> An audit of improvements needed in association with other users. An agreed work plan with building owner on improvements. Allocation of resources necessary to complete works. 	<ul style="list-style-type: none"> Renovations completed by 1 March 2017. Technical improvements to lighting, sound, communications systems completed by 1 July 2017. Front of House and exterior improvements complete by 1 July 2017.
People Strategy A dynamic theatre company that already exists and attracts the best performers and support personnel	<ul style="list-style-type: none"> Positions within an organisational structure to be established. 	<ul style="list-style-type: none"> Nextstage recognised as a high performing organisation at the forefront of the profession. 	<ul style="list-style-type: none"> All roles within the organisation scoped, profiled and filled. Sufficient operational revenue secured to remunerate staff and contractors. Develop HR policies to ensure consistency and fairness. 	<ul style="list-style-type: none"> Operational budgets created in line with revenue as per strategy 1. Job profiles for key management developed by 1 October 2016. Appointments made within 3 months of advertising.
Education Strategy Leverage our skills and talents to benefit the education of young people	<ul style="list-style-type: none"> Partners and funders recognise and value the educational benefits of theatrical performance. 	<ul style="list-style-type: none"> Nextstage known as an educational pathway and facilitator. A company where learning through performance is valued. 	<ul style="list-style-type: none"> Establish a pathway for high school drama students to perform or assist in Nextstage productions. Partner with funders to enable free access to Nextstage productions for schools. Facilitate performances that challenge and educate the wider community. 	<ul style="list-style-type: none"> Develop Secondary Schools Mentoring Programme by 1 April 2017. Partner with funder or sponsor to enable 1000 children per annum to see live theatre. Partner with government or non-government agencies to facilitate performance that challenges social norms, behaviours or parameters.
Hutt Showcase Strategy Extend Hutt Arts and Cultural profile in Aotearoa and internationally	<ul style="list-style-type: none"> Our stories showcased and available to present nationally and internationally. High quality productions attracted to the Hutt. 	<ul style="list-style-type: none"> Hutt's position in the international arts network cemented. Touring shows choose the Hutt as a preferred location. Local economic benefits are leveraged from the quality of shows presented. 	<ul style="list-style-type: none"> Nextstage develops partnerships with local storytellers, writers and developers. Nextstage develops strong formal relationships within the international performing arts community. Nextstage seeks funding and sponsorship partnerships to enable content delivery. 	<ul style="list-style-type: none"> At least one international/national production annually presenting in the Hutt from 2017 onwards. At least one 'local' story told through theatre annually and presented in the Hutt from 2017 onwards.

Organisational Structure



Operational Model

The Trust is governed by a Board of Trustees under the terms of the Deed of Trust for the Nextstage Theatre Charitable Trust.

Nextstage Theatre Charitable Trust operates as Nextstage Theatre Company. Artistic Director, Geraldine Brophy leads the artistic vision of the company. Actors, musicians and associates are contracted on a performance by performance basis. Pam Hindmarsh leads production management, which includes lighting and sound technicians, props and stage management.

The Trust also contracts out specialist assistance where required, in areas such as marketing and publicity.

Nextstage has found a home at the Little Theatre. Some productions in the future may require access to a larger performance and audience space.

Strategically, Nextstage Theatre Company has strong linkages and networks within the performing arts community. It is these connections that will play a vital part in attracting other artists and shows to perform in Hutt City in the coming years, either as co-productions or independent touring shows.

Board of Trustees

The Board of Trustees of the Nextstage Theatre Charitable Trust are:

Sue Avison, Chair

Alister Skene

Julie Reddish

Arini Poutu

Dianne Armstrong

Governance Principles

In order to be successful we must do the following:

- The Trustees must, first and foremost, exercise their fiduciary duty and responsibilities to act in accordance with the charitable purposes articulated in the trust deed.
- Operate an efficient and effective operational model, ensuring good value is demonstrated to our funders, partners and the community that supports us.
- Act in a consistent and transparent manner that is consistent to what we say we are going to do in our strategic plan.
- Be fiscally aware, prudent and resourceful.
- Be a good employer. This means providing a safe working environment for our staff, contractors and volunteers.
- Be a good host. This means hosting our audience in a safe, welcoming environment, meeting our health and safety obligations, and acknowledging our legal duty of care whilst hosting people who attend our performances.
- Exhibit a sense of social, cultural and environmental responsibility and having regard for the community we serve.

2015 Season

NEXTSTAGE THEATRE
presents a return season of

SLEEPING AROUND

do friends have to be qualified?

starring
CARMEL MCGLONE &
GERALDINE BROPHY

22 / 23 / 24 / 25 / 26 july
7.30 pm / \$35 tickets

where
THE LITTLE THEATRE
LOWER HUTT

bookings
EVENTFINDA or iSITE

bar & food available

ph enquires
020 4076 9046

UNUSUAL & STIMULATING
COMEDY stuff

FUN ROMP...OODLES OF WIT
& WISDOM hutt news

n@xtstage



n@xtstage
booking contact:
ess@huttcity.govt.nz

NEXTSTAGE
THEATRE PRESENTS

SNOW BRIGHT

AND THE
FROZEN WASTE

an eco fairytale

3 / 4 / 5 november 2015



NEXTSTAGE
THEATRE presents

MRS MERRY'S CHRISTMAS CONCERT

starring
GERALDINE BROPHY

14 / 15 / 16 / 17 / 18
december 2015

7:30pm / \$35 tickets

tickets from EVENTFINDA.CO.NZ or
from our friends at LITTLE CAFE
at the Lower Hutt Library

n@xtstage

LITTLE
CAFE

2 Queens Drive, Lower Hutt



n@xtstage
www.nextstage.co.nz

more people enjoying
high quality arts, more often

Proudly supported by
APEX
print + design
Petone



